



FINISHING SOLUTIONS

Industrial Finishing Equipment



FEATURES & Benefits



TRITON 308
Air Spray or HVLP
Fine Finish Spray Package



TRITON 1030 HP
Air-Operated
Double Diaphragm Pump



Falcon
Air-Assisted Spray Package



Merkur
Air-Assisted Spray Package



President
Airless Spray Package

TRITON™ 308

*Low pulsation delivery.
Quick pump priming.
Quick flushing capability.*

Recirculation valve.

*Consistent and high quality finish.
Reduces downtime during colour changes.
Quick and easy colour changes and clean-up.
Recirculation to maintain material suspension.*

TRITON™ 308 HP/TRITON™ 1030 HP

*High pressure diaphragm pump.
Less material wear.
Compact design.
Diaphragm pump design.
High flow capability.*

*Feed pump for circulating systems.
For shear sensitive materials.
Easy to integrate.
Less service, less downtime.
Feed multiple guns.*

FALCON™

*Stainless steel construction.
2-way seal.
High flow piston valve.
New inlet valve design.
Easy to service pump.*

*Handles wide range of fluids.
Longer life packings.
Handles wide range of material viscosities.
Easy to flush.
Quick material change.*

MERKUR™

*All stainless steel pump construction.

Low pulsation output, high flow rate delivery.
Low sound level air motor operation.
Enclosed throat seal and rod.
Self-adjusting pump packings.*

*Handles a wide range of materials including waterborne.
Consistent finishing quality, multiple gun capabilities.
Improves working conditions.
Dust and dirt protection.
Less service downtime.*

MONARK® /PRESIDENT®

*Proven pumping technology.
Reliable air motor.
Stainless steel or carbon steel models.
Durable construction.*

*Highly reliable.
Low maintenance operation.
Handles a wide range of fluids.
For severe environment.*

FEATURES & Benefits

BULLDOG®/KING® (Xtreme™ lowers)

*Reliable air motor technology.
Quick knock down features.*

*PlasmaCoat™ rods and XtremeSeals™
packings.
Industry proven construction/design.*

*Low maintenance operation.
Finish routine maintenance and repairs
in half the time.
These features double the life of the pump.
Withstands the harshest environment.*

ORION®

Bellows seal.

*Low pulsation.
Excellent flushability.
Reliable air motor.*

*Superior in handling abrasive and
moisture sensitive materials.
Delivering better finish quality.
Lowering material waste.
Reducing maintenance costs.*

GLUTTON®

*Dual piston, bellows sealed.
No conventional throat seals.
Vertical ball checks design.
Reversible outlet manifold.*

*Low maintenance with no seals exposed
to atmosphere.
Handling abrasive and moisture sensitive
materials.
Ensures uniform ball wear and long life.
Simplifies plumbing installations.*

ACCESSORIES

*GRACO's accessories are made to fit your equipment to assure excellent performance,
whether you are looking for:*

- pump mounting hardware,
- pressure pots,
- heaters,
- filters,
- agitators,
- regulators,
- fittings,
- hoses

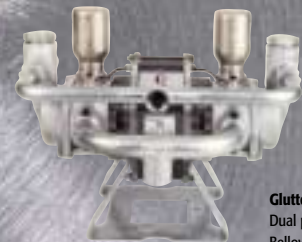
*GRACO provides the complete solution. The ease of use for the operator and the
expanded offering of models is basic for the products. A wide range of products to
measure and control precisely in rugged environments as well as fittings and hoses are
available for different pressure ratings. Our overall target: keeping your equipment in
excellent working condition is essential to reduce downtime and repair costs!*



Xtreme King 68:1
Heavy Duty Cart with
Model 510 Gun and Hose



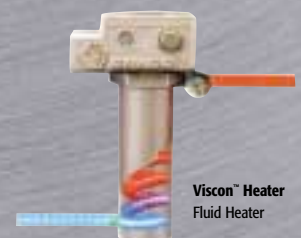
Orion
Bellows Seal Pump



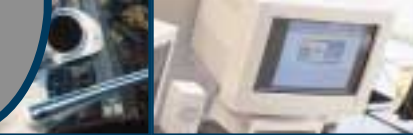
Glutton
Dual piston,
Bellows Sealed



Pressure pots
Stainless Steel,
1 Bar/7 Bar Tank



Viscon™ Heater
Fluid Heater



WOOD Finishing

TYPICAL APPLICATIONS

- Furniture
- Kitchen Cabinets
- Windows and Doors
- Wood Office Furniture
- Custom Woodworking

MATERIALS

- Top Coats
- Sealers
- Wash Coats
- Stains
- Lacquers
- Polyurethanes
- Waterborne and Solventborne



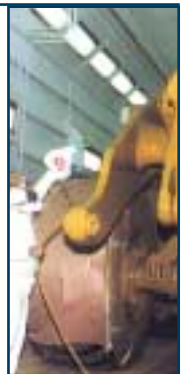
METAL Finishing

TYPICAL APPLICATIONS

- Farm Implements
- Construction Vehicles
- Aerospace
- Automotive
- Office Furniture
- Trucks, Trailers
- Bus, Coach

MATERIALS

- Primers
- Top Coats
- Clear Coats
- Enamels
- Urethanes
- Epoxies
- Alkyds
- 1,2 and 3 Components
- Waterborne and Solventborne



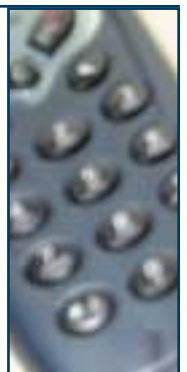
PLASTIC Finishing

TYPICAL APPLICATIONS

- Automotive
- Automotive Components
- Recreational Vehicles
- Electronics
- Cell Phones

MATERIALS

- Adhesion Promoters
- Primers
- Top Coats
- Clear Coats
- Urethanes
- 1,2 and 3 Components
- Waterborne and Solventborne





WOOD

OBJECT	SPRAY TECHNOLOGY	PUMP TECHNOLOGY
Designed pieces, office and stylish furniture, frame parts, etc.	Airspray/HVLP/Airspray ES	Diaphragm Pump
Front panels for furniture, kitchen, boards and cabinets, etc.	Air Assisted Airless/Air Assisted Airless ES	2 Ball Piston Pump, Bellows Seal Pump
Tables, door and window frames, etc.	Airless	2 Ball Piston Pump, Bellows Seal pump



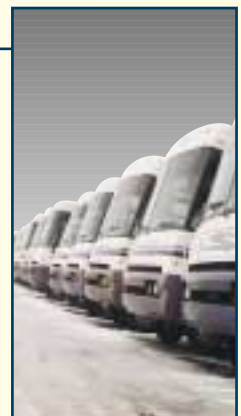
METAL

OBJECT	SPRAY TECHNOLOGY	PUMP TECHNOLOGY
Car refinishing, repair/touch up, lamps, airplanes, etc.	Airspray/HVLP/Airspray ES	Diaphragm Pump
Metal furniture, housings, etc.	Air Assisted Airless/Air Assisted Airless ES	2 Ball Piston Pump, Bellows Seal pump
Ships, wagons, storage tanks, metal construction, etc.	Airless	2 Ball Piston Pump

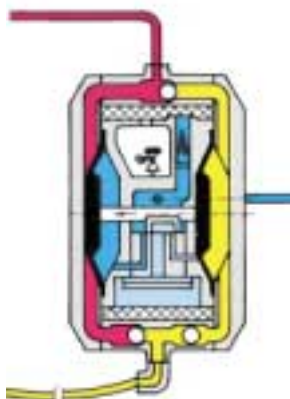


PLASTIC

OBJECT	SPRAY TECHNOLOGY	PUMP TECHNOLOGY
Car bumpers, automotive plastic parts, covers, sport devices, etc.	Airspray/HVLP/Airspray ES	Diaphragm Pump
Automotive plastic parts, etc.	Air Assisted Airless/Air Assisted Airless ES	2 Ball Piston Pump
Windmill blades, etc.	Airless	2 Ball Piston Pump



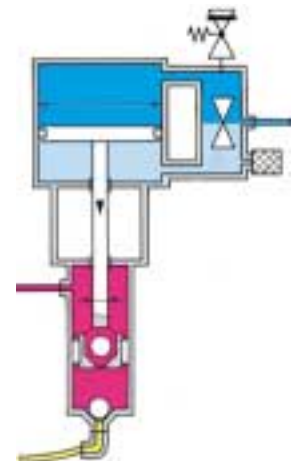
PUMP TECHNOLOGY	GRACO BRAND	TECHNOLOGY BENEFIT	TYPICAL FLUIDS
Diaphragm Pump	TRITON™ 308 Husky™	<ul style="list-style-type: none"> • Economical pump solution • High flow capability 	<ul style="list-style-type: none"> • Low viscosity fluids • Boothside, special colour
High Pressure Diaphragm Pump	TRITON 308 HP TRITON 1030 HP	<ul style="list-style-type: none"> • High pressure for a diaphragm pump, 3:1 ratio • Low shear output • Quick colour change 	<ul style="list-style-type: none"> • Shear-sensitive fluids • Materials for smaller circulating systems
Bellows Seal Pump	Orion®	<ul style="list-style-type: none"> • No fluid seal air exposure • Handling abrasive and moisture sensitive materials • Low maintenance • Compact design 	<ul style="list-style-type: none"> • Catalyst • UV-cure coatings • Moisture and shear sensitive materials
Dual Piston Pump	Glutton®	<ul style="list-style-type: none"> • No fluid seal air exposure • Durable, Severe Duty rod, cylinder and seals 	<ul style="list-style-type: none"> • Catalysts • Moisture-sensitive coatings • UV-cure coatings • Abrasive fluids
2-Ball Piston Pump	Falcon™ Merkur™ Monark® President® Bulldog® King® Viscount®	<ul style="list-style-type: none"> • Wide performance range capability • Low to high pressure capability • Uniform and easily controlled delivery • Durable, Severe Duty rod, cylinder and seals 	<ul style="list-style-type: none"> • Solventborne fluids • Waterborne fluids • High solid coatings • Lacquers • Enamels • Urethanes • Epoxies
4-Ball Piston Pump	High-Flo High-Flo Plus	<ul style="list-style-type: none"> • Low cycle rate operation • Low shear output • Mid-range to large volume output 	<ul style="list-style-type: none"> • Waterborne and solventborne materials for paint circulating systems



DIAPHRAGM PUMP



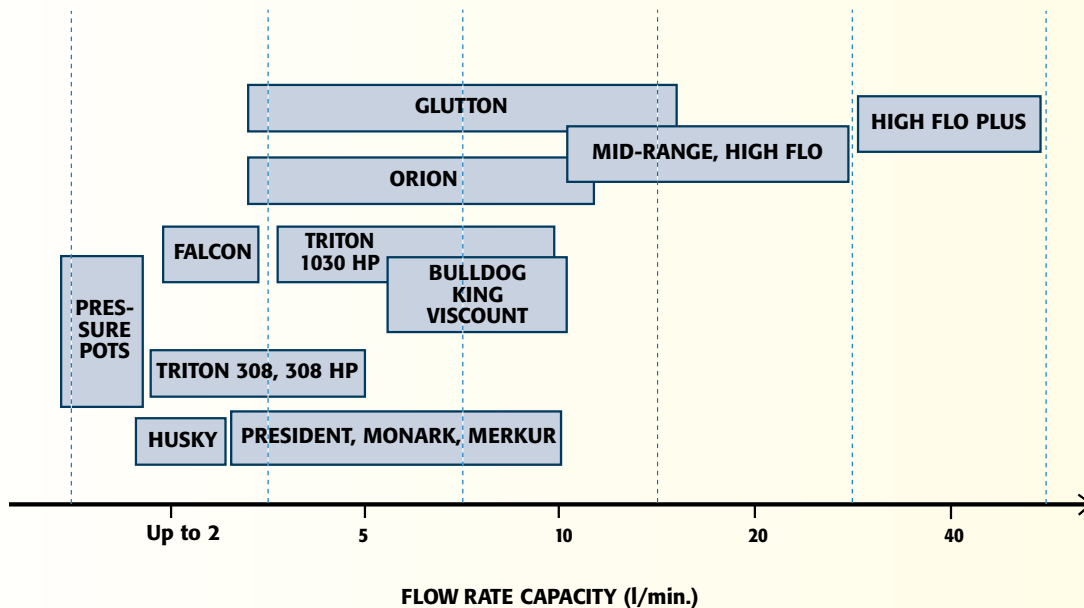
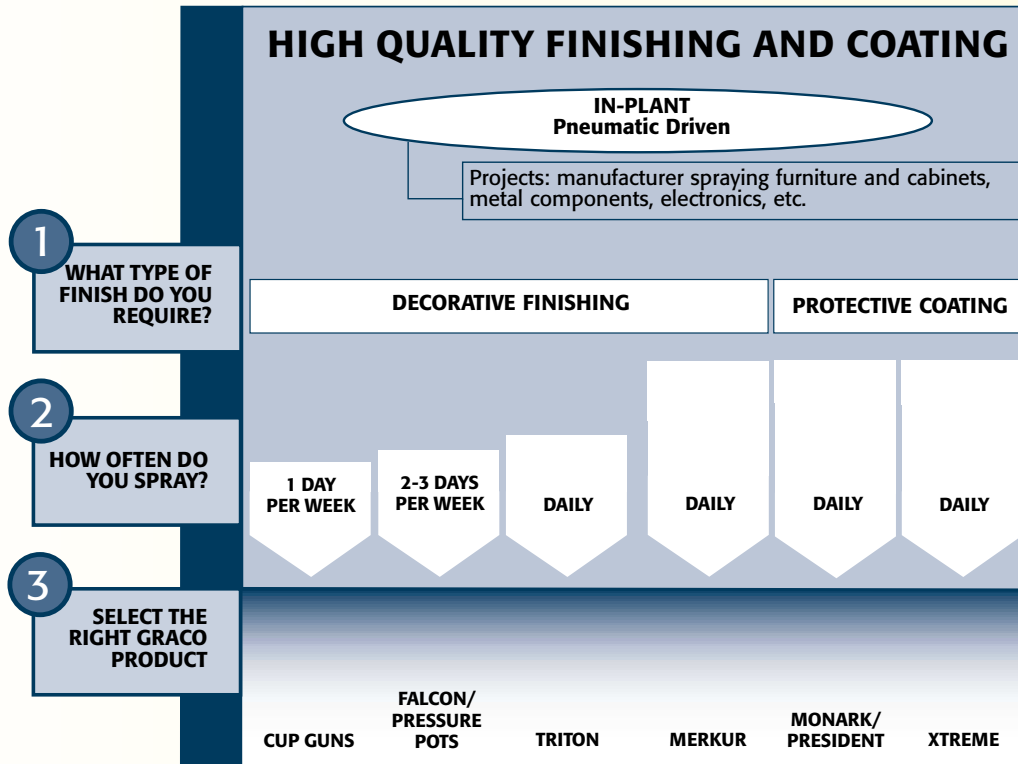
HIGH PRESSURE DIAPHRAGM PUMP



PISTON PUMP

SELECT

the appropriate Technology



Your Selection



ABOUT GRACO

PROVEN QUALITY. LEADING TECHNOLOGY.

Founded in 1926, Graco is among the leading group in fluid handling systems and components. Graco products move, measure, control, dispense and apply a wide range of fluids and viscous materials used in vehicle lubrication, commercial and industrial settings.

The company's success is based on its unwavering commitment to technical excellence, world-class manufacturing and first-class customer service. Working closely with qualified distributors, Graco offers systems, products and technology which set quality standards in a wide range of fluid handling solutions. Graco provides equipment for spray finishing, protective coating, paint circulation, lubrication, and dispensing sealants and adhesives, along with power application equipment for the contractor industry. Graco's ongoing investment in fluid management and control will continue to provide innovative solutions to a diverse global market.

GRACO HEADQUARTERS

AMERICAS

MINNESOTA

Worldwide Headquarters
Graco Inc.
88-11th Avenue N.E.
Minneapolis, MN 55413

MAILING ADDRESS

P.O. Box 1441
Minneapolis, MN 55440-1441
Tel 612 623-6000
Fax 612 623-6777

MICHIGAN

Automotive Headquarters
and Sales Office
47800 Halyard Drive
Plymouth, MI 48170
Tel 734 416-3400
Fax 734 416-3441

EUROPE

BELGIUM

European Headquarters
Graco N.V.
Industrieterrein - Oude Bunders
Slakweidestraat 31
3630 Maasmechelen, Belgium
Tel 32 89 770 700
Fax 32 89 770 777

ASIA PACIFIC

JAPAN

Graco K.K.
1-27-12 Hayabuchi
Tsuzuki-ku
Yokohama City, Japan 2240025
Tel 81 45 593 7300
Fax 81 45 593 7301

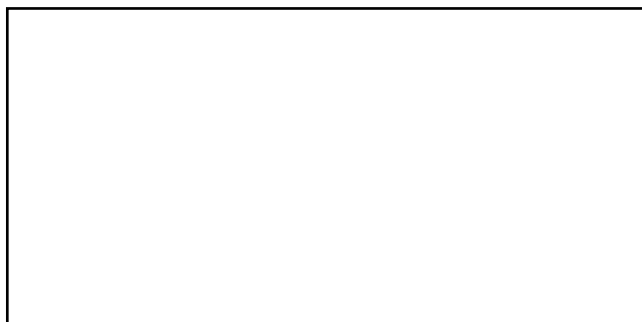
CHINA

Graco Hong Kong Ltd.
Representative Office,
Room 118 1st Floor
No. 2 Xin Yuan Building
No. 509 Cao Bao Road
Shanghai, P.R.China 200233
Tel 86 21 649 50088
Fax 86 21 649 50077

KOREA

Graco Korea Inc.
3rd Fl., Doorim Bldg.
164-21 Poi-Dong,
Kangnam-Ku
Seoul, Korea 135-260
Tel 82 2 575-8901
Fax 82 2 571-9422

Graco is registered to I.S. EN ISO 9001



GRACO N.V.
Industrieterrein Oude Bunders
Slakweidestraat 31 • B-3630 Maasmechelen
Tel: +32 (89) 770 700 • Fax: +32 (89) 770 777
www.graco.be